



**halliday  
baillie**

## HB 500

### STAIR RAIL BRACKET

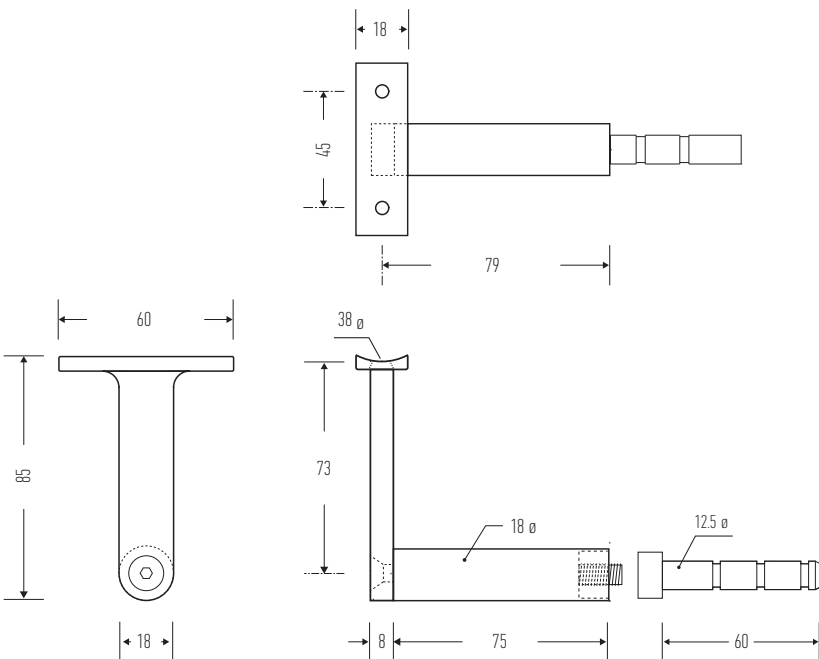
The Halliday + Baillie HB500 Handrail Bracket provides a flexible solution for 30-50mm diameter timber handrails. Suitable for interior or covered exterior situations. For exterior or marine environments, please specify the HB510 bracket in marine grade 316 stainless steel.

Projection from wall (offstand) : 84mm  
Overall height (upstand) : 85mm

Includes all fasteners. Epoxy sold separately (please contact your local H+B dealer for further information).

Material : non-anodized aluminium alloy  
Recommended Spacing : 600-800mm

Available in all standard finishes except "BN" Brushed Nickel. Please check with your H+B representative as not all finishes are available in all regions. See finishes sheet for further details.



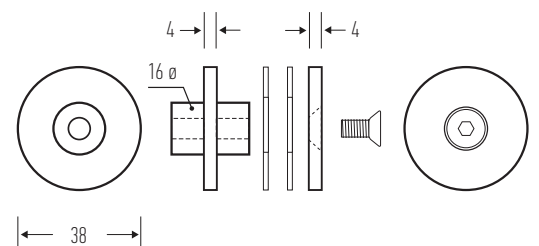
## HB 502

### GLASS FIXING KIT FOR HB 500 BRACKET

Suitable for 10mm, 12mm and 15mm glass thickness.

Finishes to match the HB500 Bracket.

Glass fixing kits sold separately (used in conjunction with the bracket, and not as a replacement).



Halliday + Baillie brackets are tested in accordance with both the AS/NZS 1170.1:2002 (Structural Design Actions) standards and the International Building Code, IBC (2003) to comply with the 200lb fall rating.

Designed and manufactured in New Zealand. For more information, installation templates, and measured drawings of this product and others please visit : [www.hallidaybaillie.com](http://www.hallidaybaillie.com) or contact your authorized Halliday + Baillie dealer. All information subject to change.